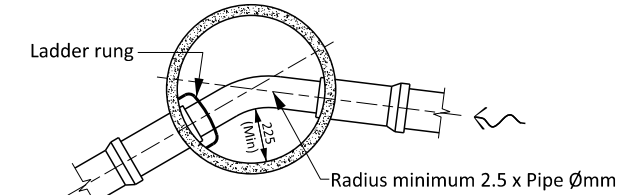
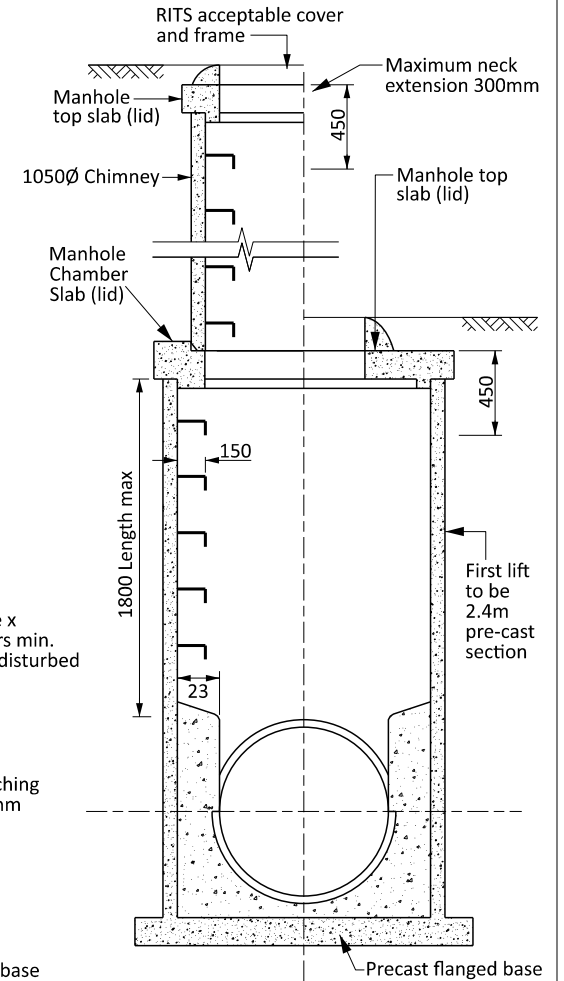


**NOTES:**

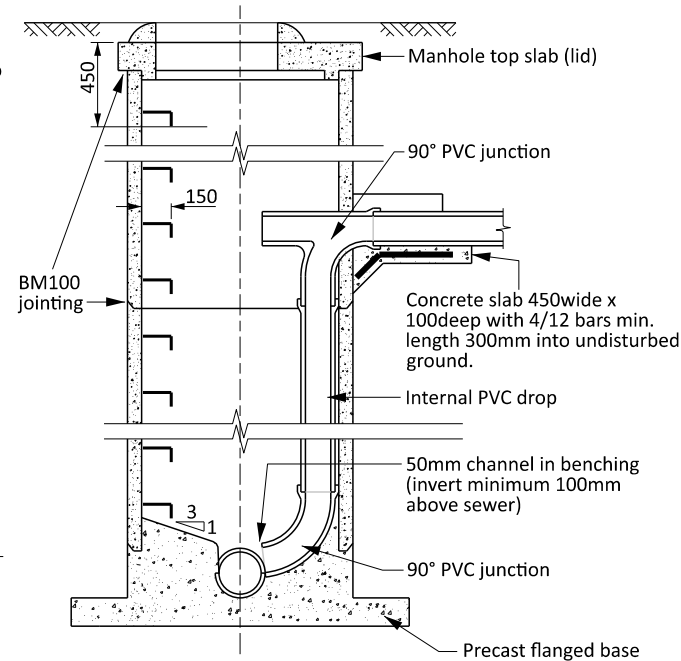
1. Diameters of precast manhole pipes are nominal only.
2. Wastewater manholes to use ceramic or accepted pre-formed channel.  
Stormwater manholes may use concrete.
3. See standard detail for ductile iron cover and frame to fit recess and locking bolts and pre-cast slab detail.
4. Ground level tolerances: Pavement +0mm, -5mm  
Berm +5mm, -5mm  
Footpath +10mm, -0mm
5. Manhole cover and frame to follow ground slope.
6. Accepted steps as per Acceptable Products list.



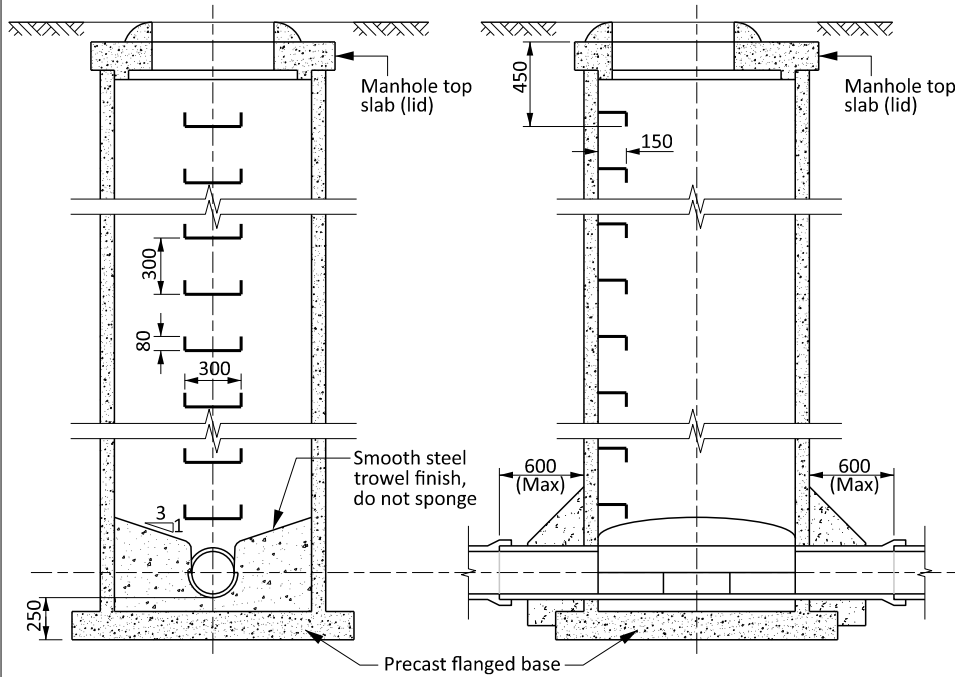
**TYPICAL PLAN CURVE THROUGH MANHOLE**



**DETAILS DN1350 AND OVER MANHOLES**



**DROP MANHOLES**



**DETAILS DN1050 & DN1200 MANHOLES**