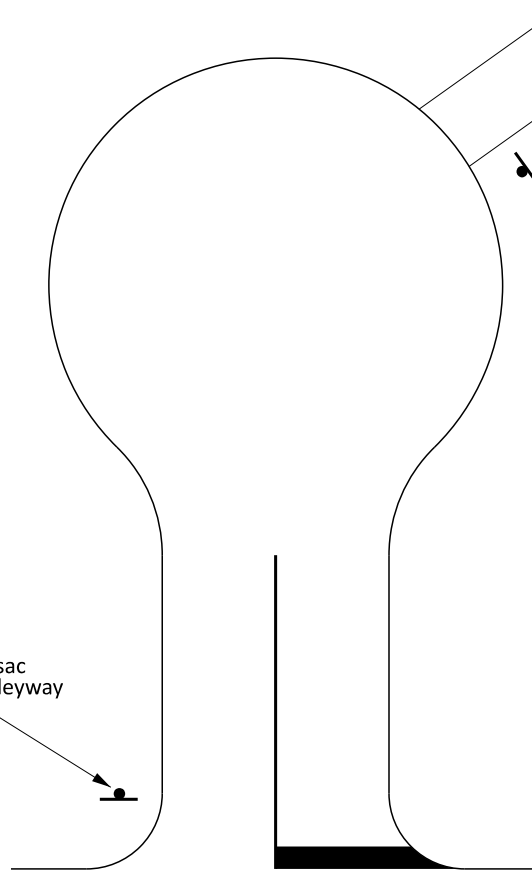
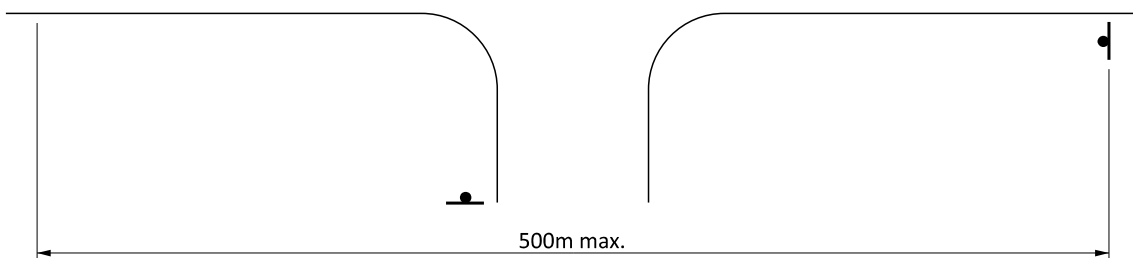


One sign at beginning of cul-de-sac only (unless cul-de-sac has an alleyway then one to go in alleyway).

Alleyway leading to major road or nearby school



CUL-DE-SAC



ROADS

NOTE:

All neighbourhood watch signs are to be installed on existing street furniture (eg street light columns or signs) where possible using approved brackets. No new poles are to be installed unless no alternative is available.