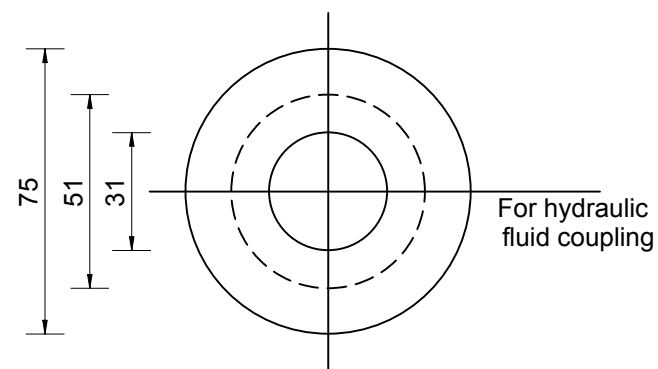
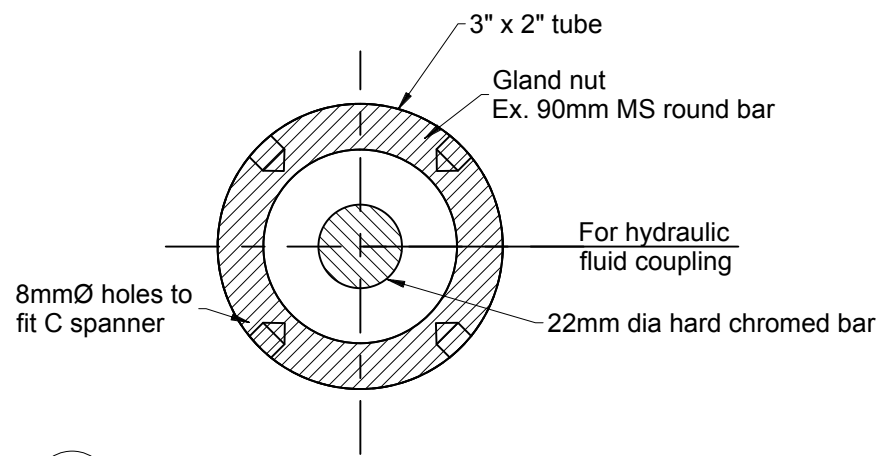


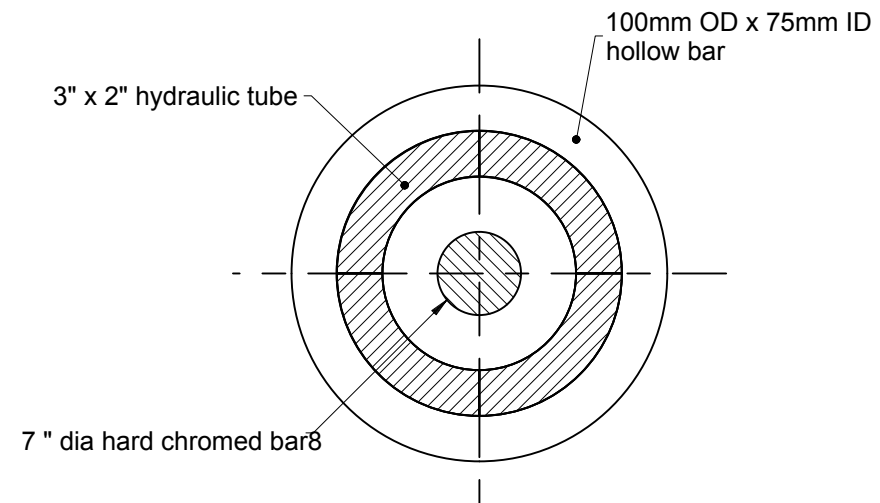
**1** General Assembly  
1:5



**2** Section  
1:2



**4** Section  
1:2



**3** Section  
1:2

**NOTES**

1. All dimensions are in millimetres unless otherwise shown.
2. Particular care is to be taken to ensure that all welds are compatible with the materials being joined.
3. All steel plate to AS 3678 GR300 or equivalent unless indicated otherwise.
4. All bolts and pins required for lifting mechanism to be supplied by contractor. Bolts to be electrozonic galvanised unless specified otherwise.
5. Remove all burrs, sharp edges, weld slag and spatter after fabrication.
6. Dimensions and Tolerances  
The contractor shall note that this drawing does not constitute a 'shop drawing'. All dimensions and tolerances are to be checked and confirmed prior to machining, fabrication and assembly. This particularly applies to details associated with seals and wear rings.
7. Seals and Wear Rings:  
Are to be of the highest quality. The brands and types indicated on the drawings shall be used unless the engineer gives prior approval to a suitable alternative.
8. Corrosion Protection:  
All external surfaces (except the hard chromed bar) are to have a protective coating applied in accordance with the specification.

0	Construction	A Morphet	4/12/19
Rev	Description	Approved	Date



**Standard Drawings  
Sluice Gate  
Hydraulic Ram**

Date. 4 December 2019	Drawn. A McCaughan
Checked. M Farrell	

Drawing Number WRC-1695	REV S.1	0
----------------------------	------------	---

Scale. As indicated	@ A3
------------------------	------